



# FOR LEASE

## 815 HORNBY STREET

OFFICE SPACE FOR LEASE ACROSS FROM THE  
ROBSON SQUARE PROVINCIAL COURTHOUSE ON  
THE CORNER OF ROBSON AND HORNBY STREET

### LEASING INQUIRIES

**DAN SMITH**  
Director of Leasing  
T 604.689.1119  
[dans@relianceproperties.ca](mailto:dans@relianceproperties.ca)

**ALAN CUSACK**  
Manager, Leasing  
T 236.982.1678  
[alanc@relianceproperties.ca](mailto:alanc@relianceproperties.ca)



**RELIANCE  
PROPERTIES**





## 815 HORNBY STREET

### BUILDING FEATURES



HVAC for year round comfort



24/7 secured access and monitored CCTV



On-site management by Reliance Properties Ltd.



Full height glass windows provide ample natural lighting



Secured underground parking available at market rates  
(subject to availability)

### LOCATION



**Excellent Transit:** Nearby bike paths, multiple bus routes, and the Skytrain and Expo Lines at Granville Station



**Recreational Spaces:** Pacific Centre, Robson Street, Robson Square & Ice Rink, Scotiabank Theatre, Vancouver Art Gallery



**Restaurants & Cafes:** Cafe Artigiano, JOEY Burrard, Italian Kitchen, Starbucks, La Taqueria, Le Crocodile, Hawksworth



**Business Services:** BMO, Scotiabank, RBC, TD Bank, Provincial & Supreme Courts of BC



100 • WALK SCORE



100 • TRANSIT SCORE

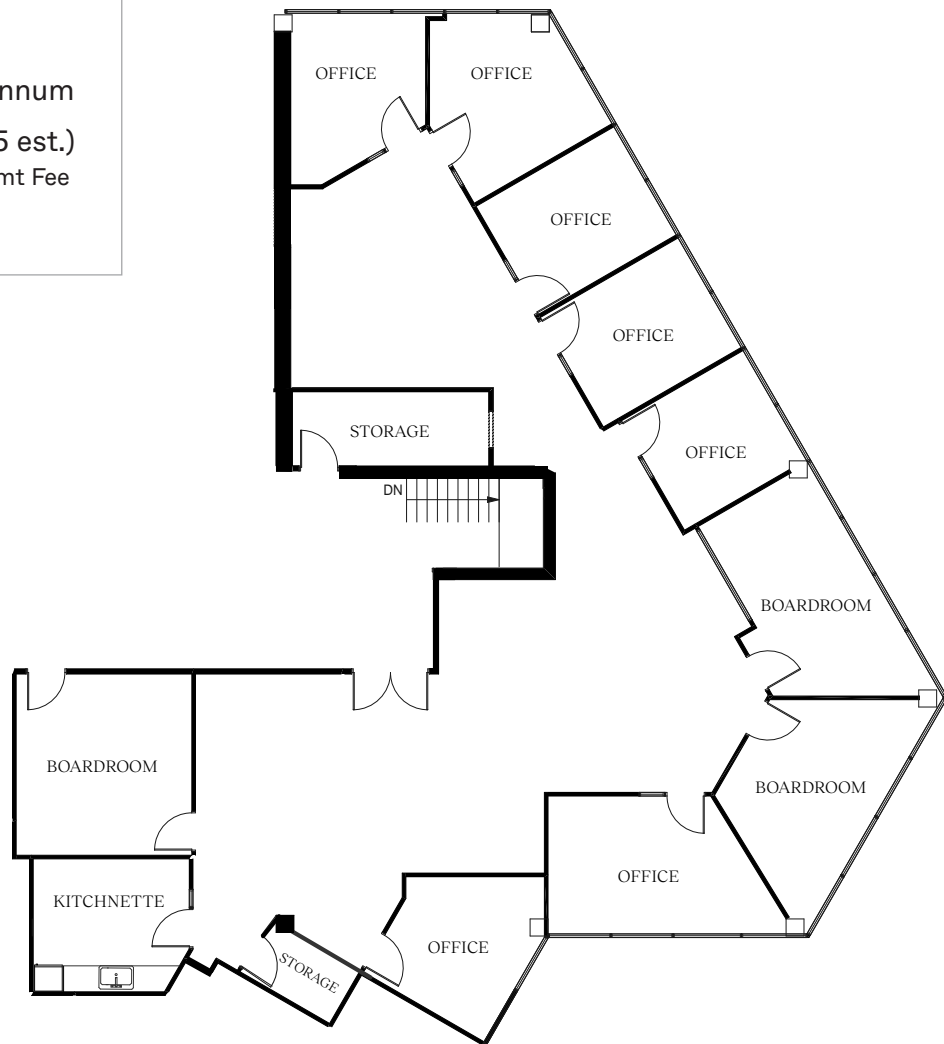


91 • BIKE SCORE

# #401 - 815 HORNBY STREET

<b>RENTABLE AREA</b>	3,864 sf
<b>AVAILABLE</b>	Immediately
<b>BASIC RENT</b>	\$21.00 PSF per annum
<b>ADDITIONAL RENT</b>	\$18.25 PSF (2025 est.) + 6% Basic Rent Mgmt Fee
<b>MONTHLY</b>	\$13,044 + GST

- » Nine (9) executive offices
- » Two (2) Boardrooms
- » Open concept collaboration area
- » Kitchen
- » Modern finishes with LED lighting
- » HVAC



Unit #401 3,864 sf

