

564 Beatty St.



RELIANCE
PROPERTIES



LEASING INQUIRIES

DAN SMITH

Director of Leasing

T 604.689.1119

dans@relianceproperties.ca

ALAN CUSACK

Manager, Leasing

T 604.694.8683

alanc@relianceproperties.ca



564 BEATTY STREET



LEED Gold-certified, designed with sustainability in mind. Advanced building systems provide exceptional comfort and lower operating costs



Rooftop deck with panoramic views of Downtown Vancouver, outdoor seating, and tenant BBQs



Modern end-of-trip facilities with showers, change rooms and day-use lockers

Exceptional transit accessibility



25 meters to Stadium-Chinatown Station (Expo Line)



750 meters to Waterfront Station (Skytrain, Expo Line & Seabus)

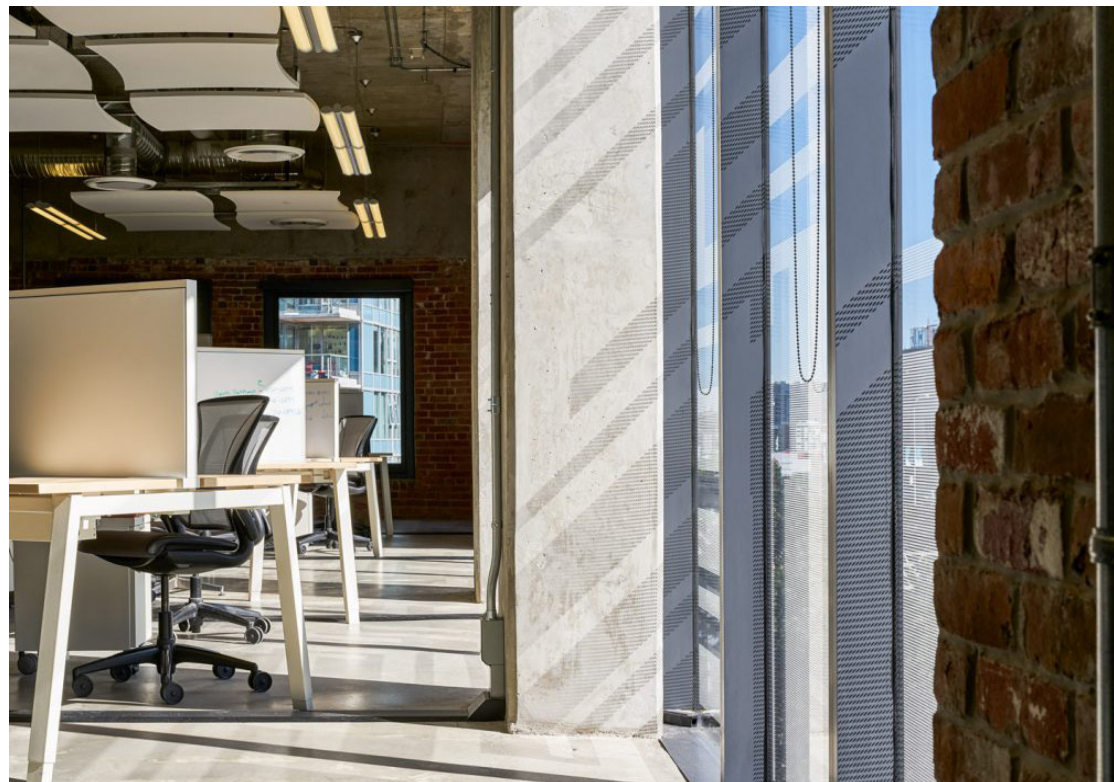


Multiple bus routes & bike paths

Gated underground parking available (at market rates)



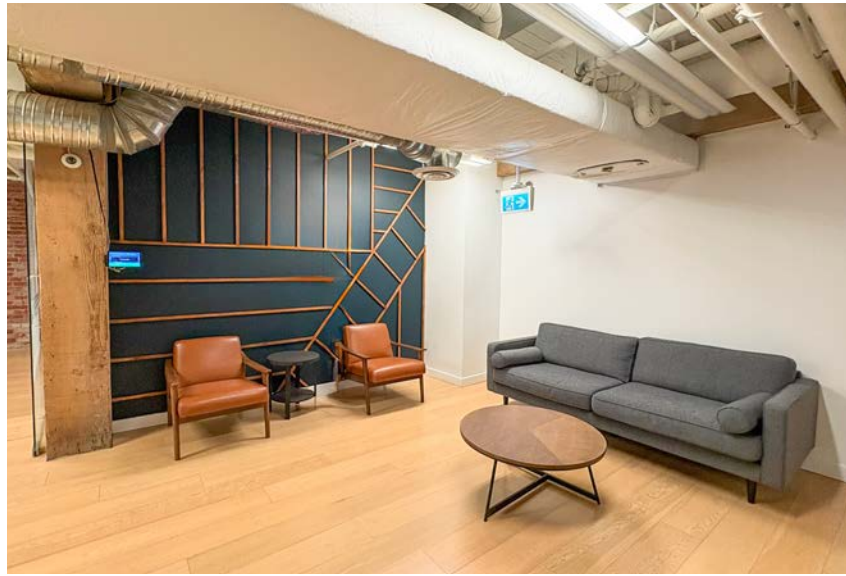
Secured bike storage



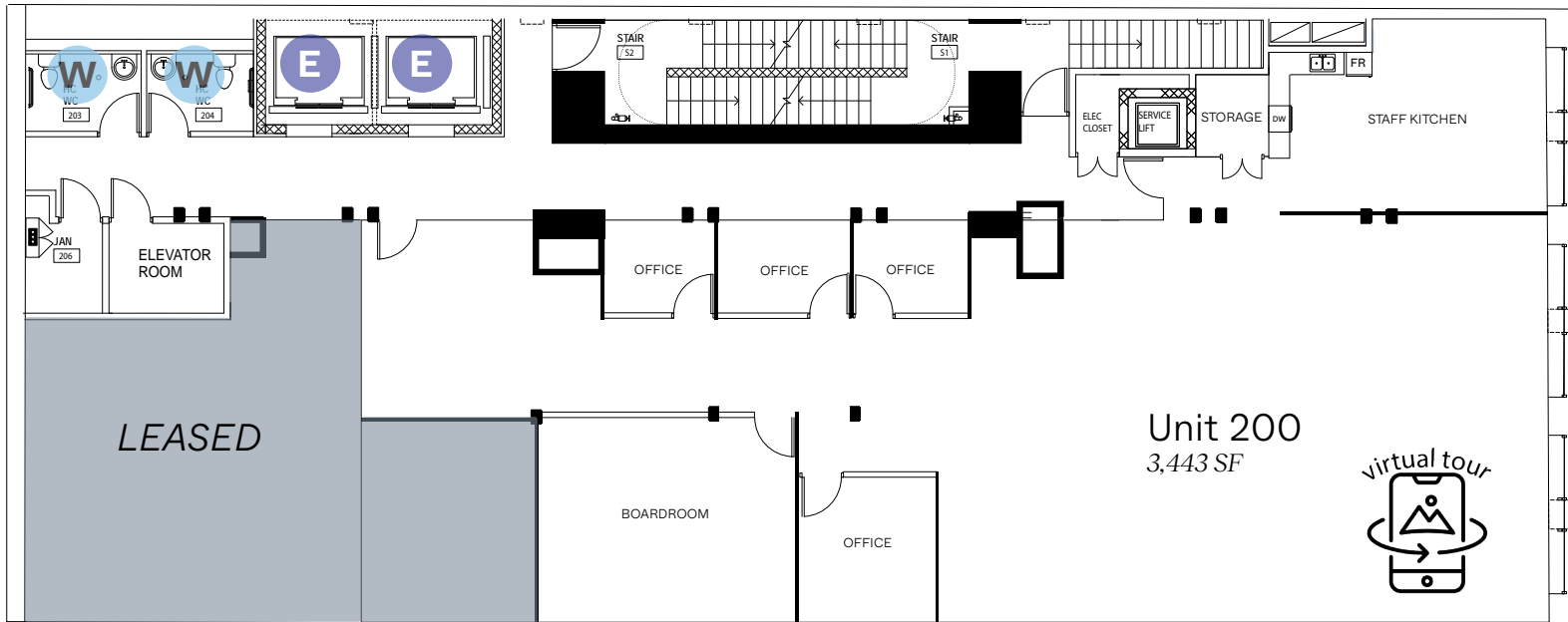
#200 - 564 BEATTY STREET

SALIENT DETAILS

RENTABLE AREA	3,443 sf
AVAILABLE	Immediately
BASIC RENT	\$26.00 PSF per annum
ADDITIONAL RENT	\$14.41 PSF (2026 est.) + 6% Basic Rent Mgmt Fee
MONTHLY	\$12,042 + GST

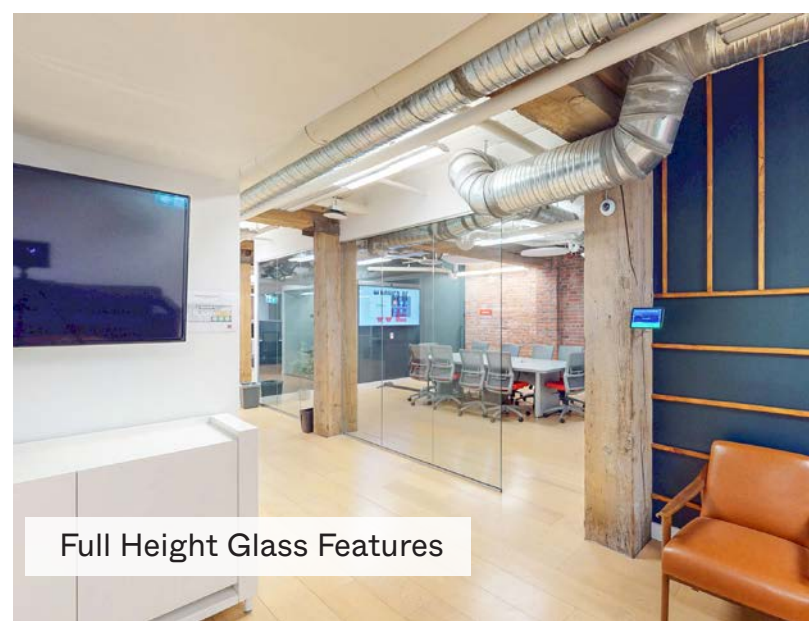


*Opportunity to lease with levels 6 & 7
for a total of 13,166 SF*

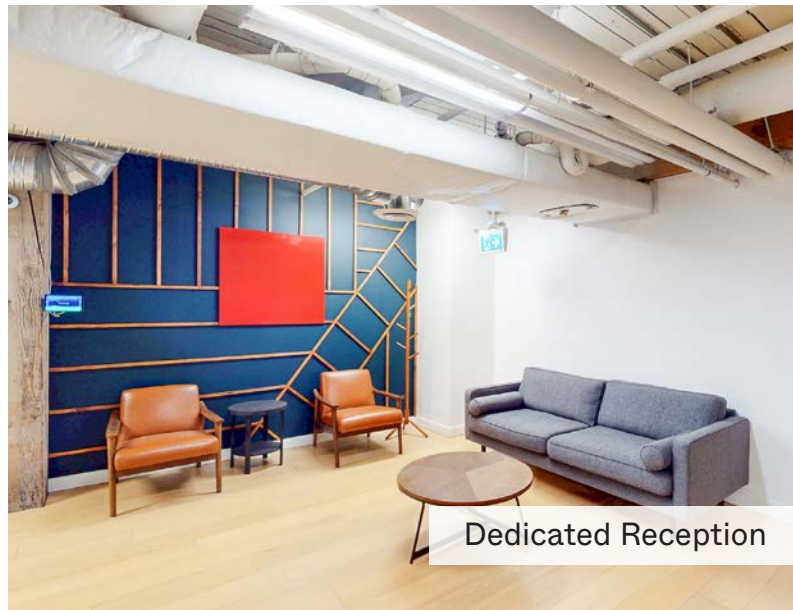


- Exposed brick and timber beam design
- Modern floor to ceiling glass offices & boardroom
- LED lighting throughout
- Hardwood flooring & glass accents
- 250amps / 3phase power
- HVAC for year-round comfort
- 24/7 secured entry and monitored CCTV

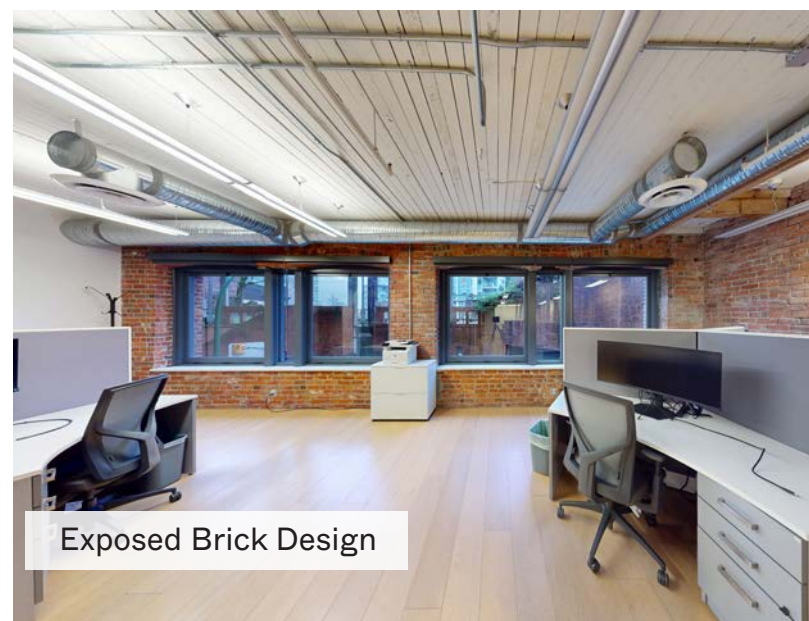
#200 - 564 BEATTY STREET - PHOTOS



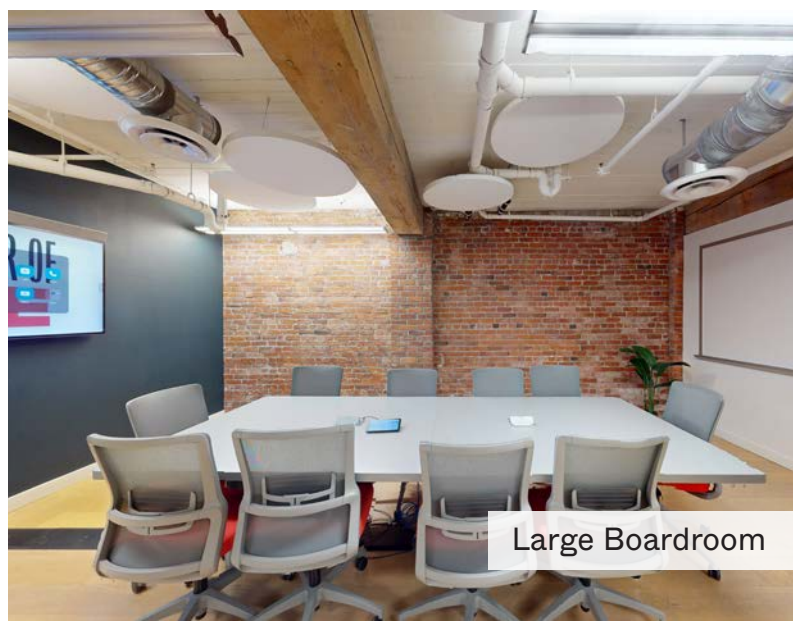
Full Height Glass Features



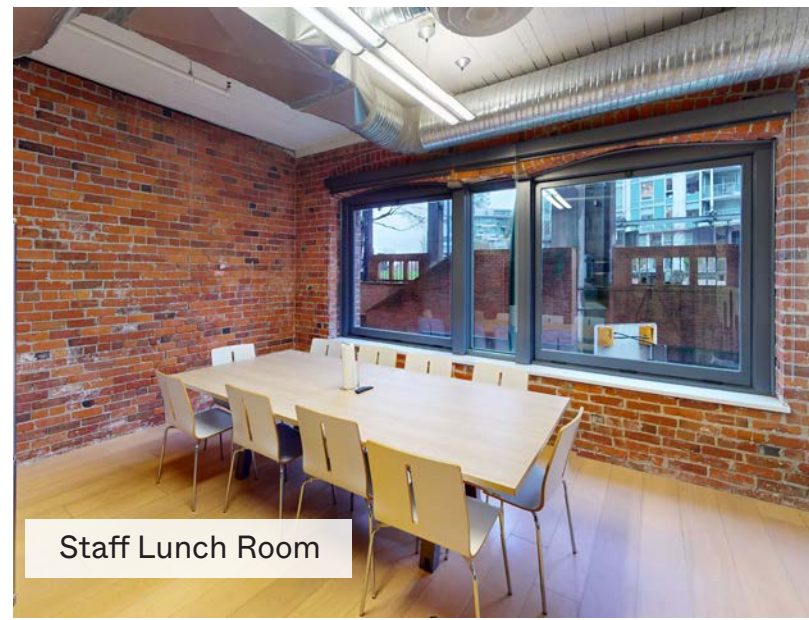
Dedicated Reception



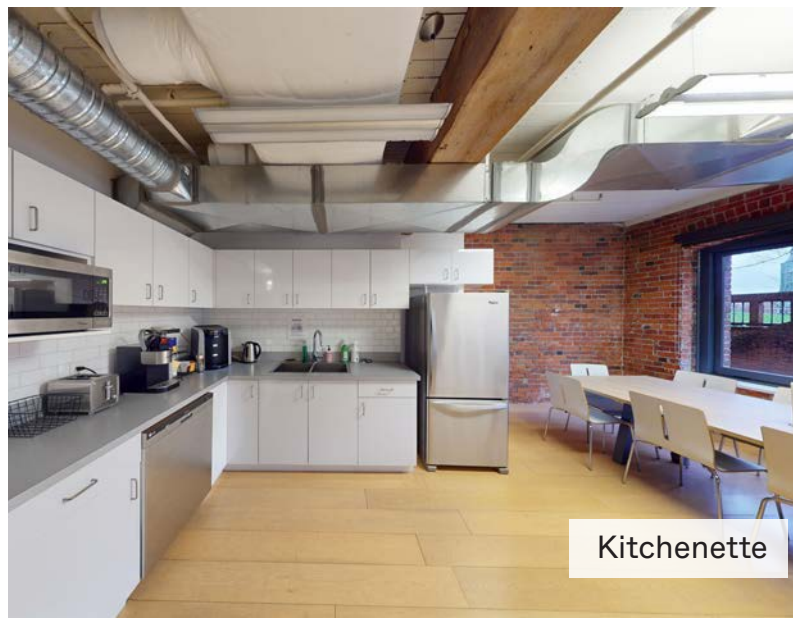
Exposed Brick Design



Large Boardroom



Staff Lunch Room



Kitchenette

LEVEL 6 & 7 - 564 BEATTY STREET

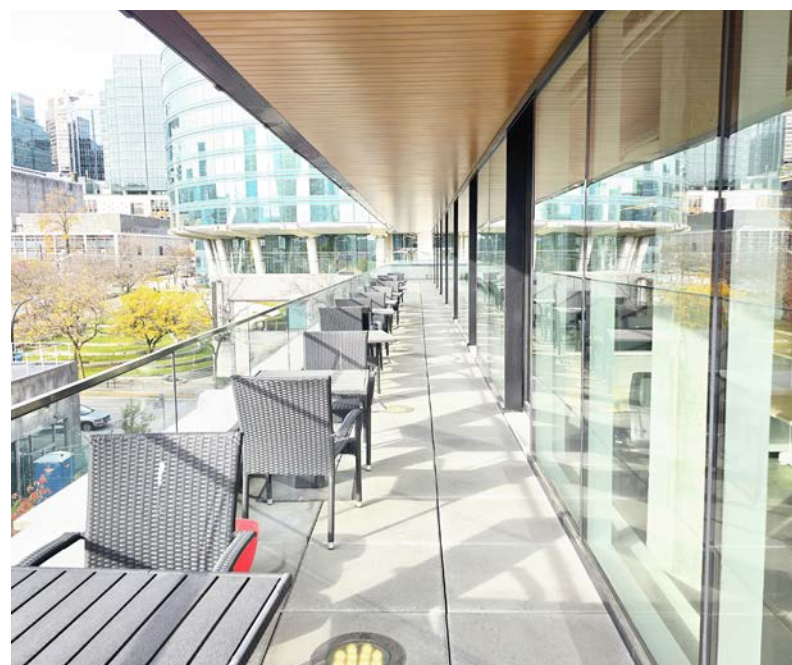
MULTI-FLOOR OPPORTUNITY

Where Modern Design Meets Heritage Architecture

Opportunity to Lease two full interconnected floors in a restored brick-and-beam landmark, complete with a custom spiral staircase, private wrap-around outdoor terrace, expansive glazing, and polished interiors. A rare workspace blending historic character, natural light, and contemporary amenities. Centrally located just steps from Stadium-Chinatown Station.



PRIVATE WRAP-AROUND
TERRACE WITH UNBEATABLE
VIEWS OF DOWNTOWN
VANCOUVER

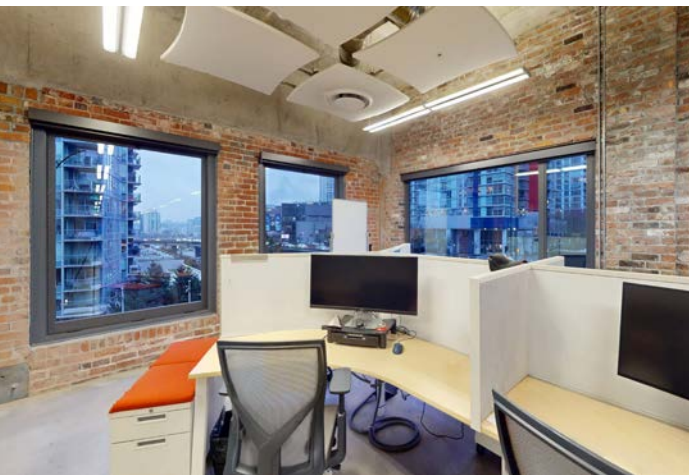


DAN SMITH, Director of Leasing
604.689.1119 • dans@relianceproperties.ca
relianceproperties.ca | leasing@relianceproperties.ca

 **RELIANCE
PROPERTIES**



Dedicated Reception & Direct Elevator Access
Floor-to-ceiling stone and millwork create a striking elevator lobby that flows directly into your customized reception area.

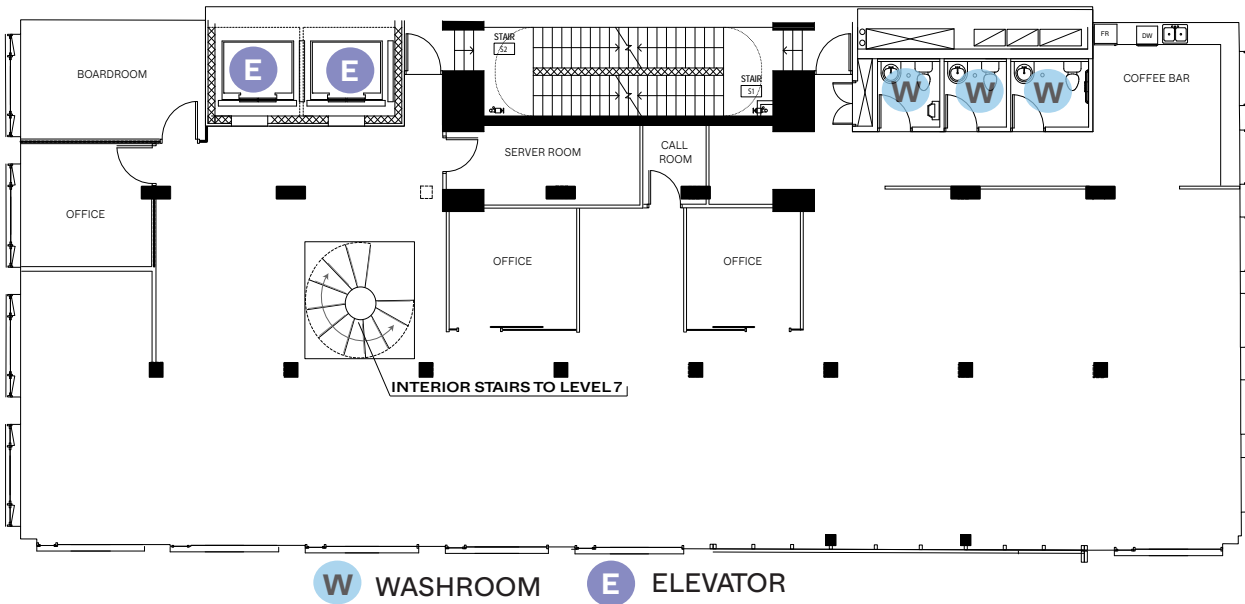


Exposed Brick & Polished Concrete Flooring



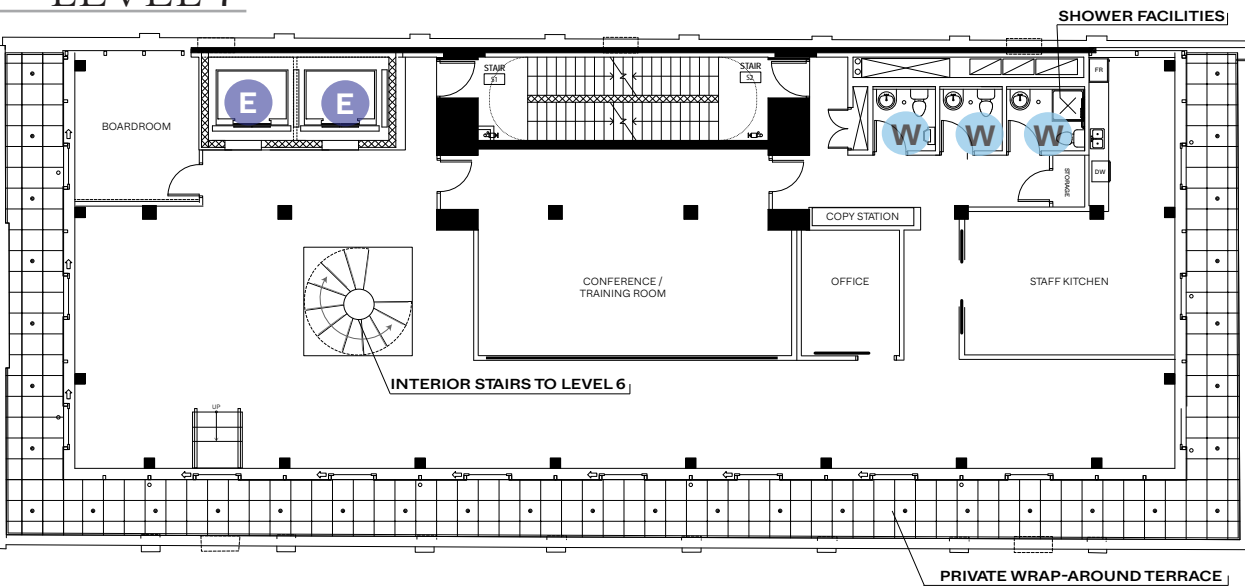
Gender-Neutral, Private Washrooms with End-of-Trip Shower facilities

LEVEL 6



- Large Boardroom
- Three Private Offices
- Kitchenette / Coffee Bar
- Call Room
- 250 amps / 3 Phase Power
- HVAC
- Direct Elevator Access
- Gender-Neutral Washrooms

LEVEL 7



- Conference / Training Room
- Boardroom
- Executive Office
- Kitchen & Lunch Room
- Private Wrap-Around Terrace
- 250amps / 3 Phase Power
- HVAC
- Gender-Neutral Washrooms

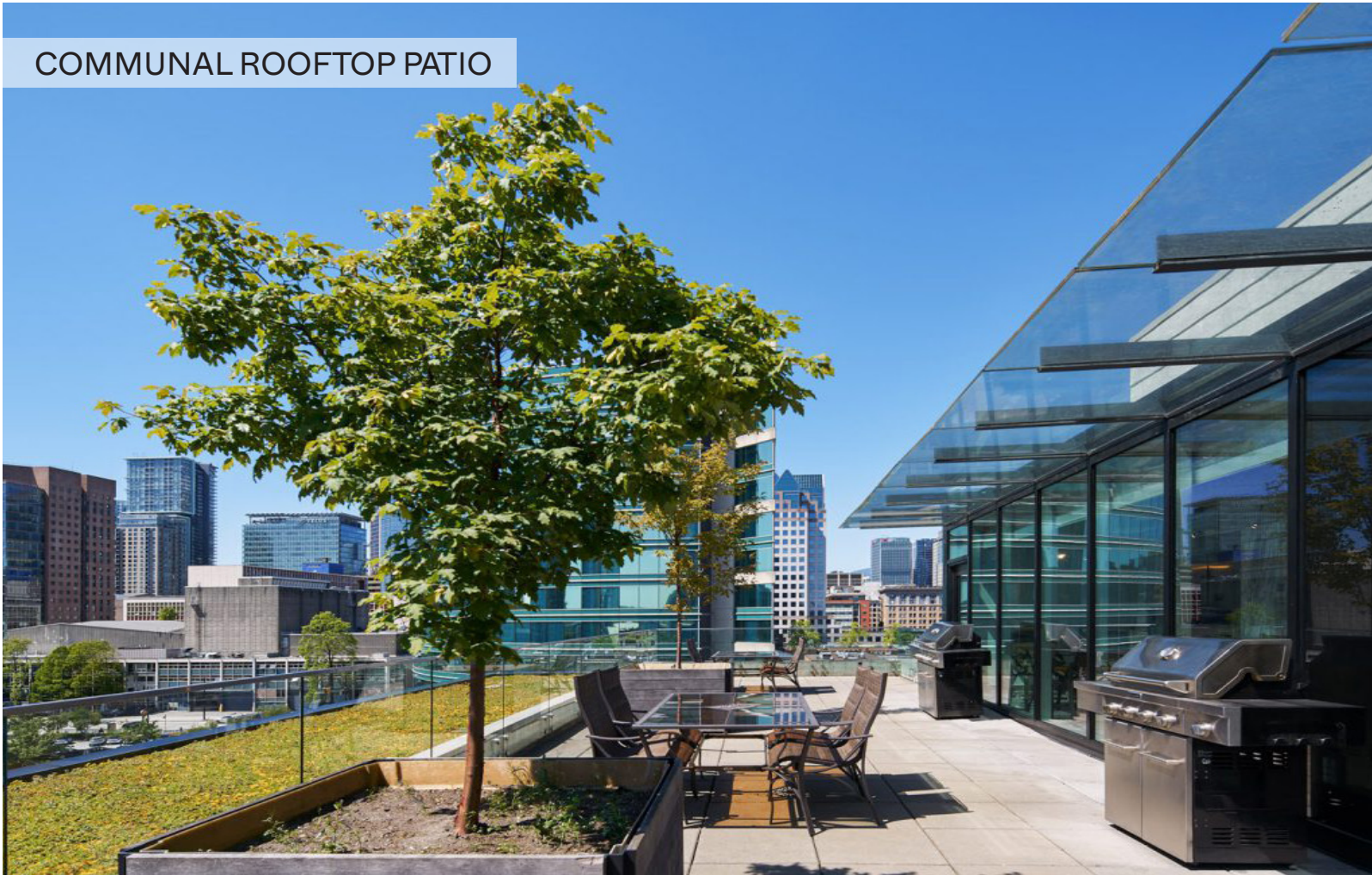
SALIENT DETAILS

RENTABLE AREA	9,723 sf
AVAILABLE	Immediately
BASIC RENT	\$38.00 PSF per annum
ADDITIONAL RENT	\$14.41 PSF (2026 est.) + 6% Basic Rent Mgmt Fee
MONTHLY	\$44,313 + GST



DAN SMITH, Director of Leasing
604.689.1119 • dans@relianceproperties.ca
relianceproperties.ca | leasing@relianceproperties.ca

COMMUNAL ROOFTOP PATIO



Recreational Spaces

- » Andy Livingston Park
- » BC Place
- » Concord Community Park
- » Queen Elizabeth Theatre
- » Rogers Arena
- » Vancouver Seawall
- » Dr. Sun Yat-Sen Garden
- » Victory Square
- » Science World

Restaurants & Cafes

- » Chambar
- » Jam Cafe
- » The Dirty Apron
- » Devil's Elbow
- » Marugame Udon
- » Shark Club
- » Brown's Socialhouse
- » Oakberry
- » Acquafarina