

564 Beatty Street
Vancouver, BC

For Lease

5,500 ft² FULL FLOOR MOVE-IN READY
OFFICE SPACE

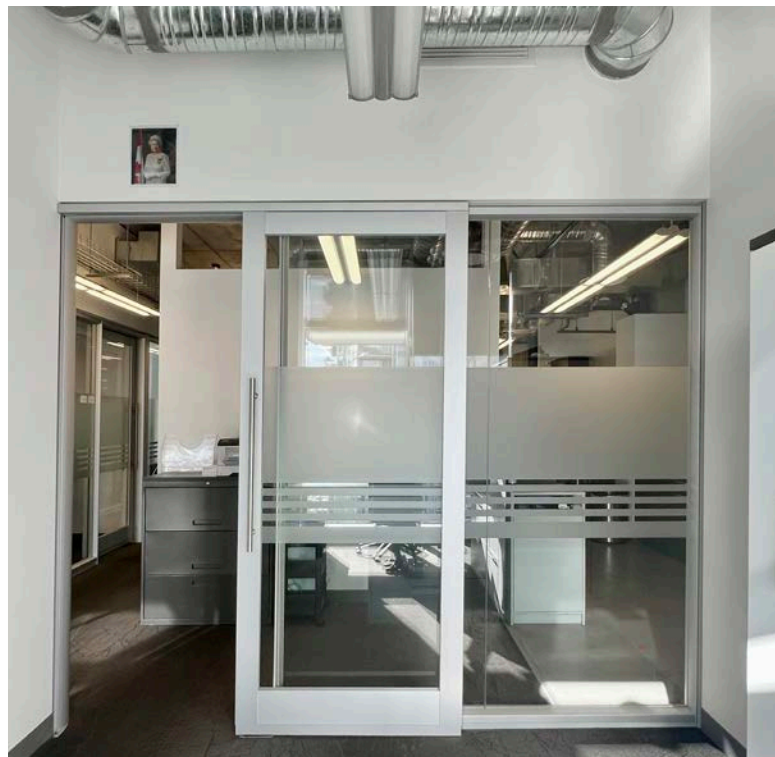
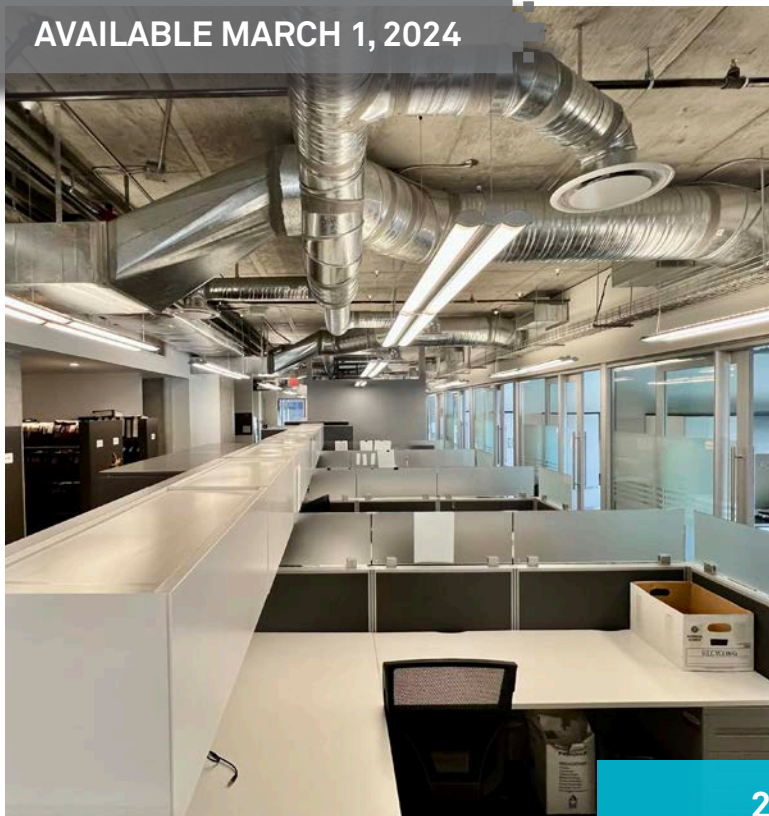
LEASING INQUIRIES

DAN SMITH
Director of Leasing
T 604.689.1119
dans@relianceproperties.ca



RELIANCE
PROPERTIES

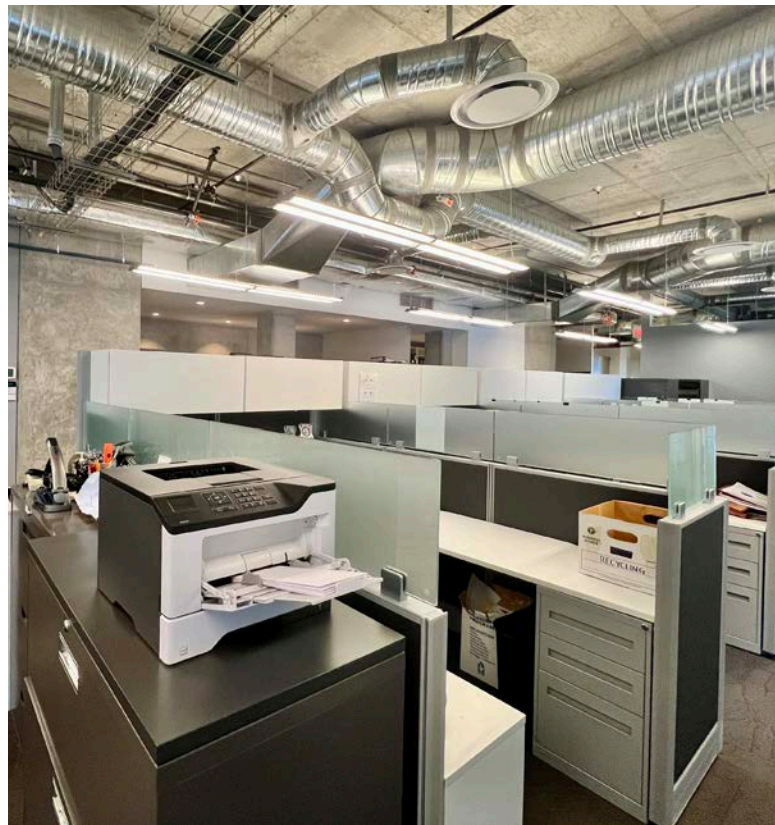
AVAILABLE MARCH 1, 2024



21
OFFICES

8
OPEN WORKSTATIONS

3
PRIVATE WASHROOMS

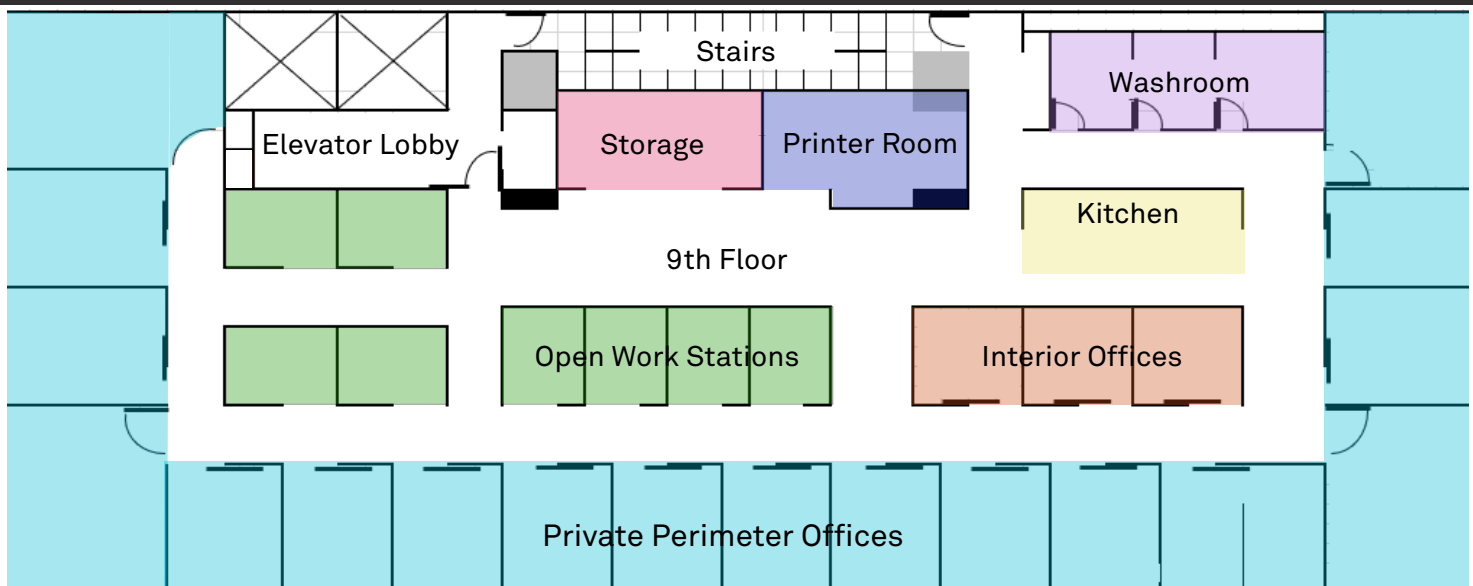


relianceproperties.ca | leasing@relianceproperties.ca

E. & O.E. All information contained herein is from sources we deem reliable, and we have no reason to doubt its accuracy; however, no guarantee or responsibility is assumed thereof, and shall not form any part of future contracts. All information should be carefully verified



RELIANCE
PROPERTIES



OVERVIEW

564 Beatty is a innovative mix of new-build and restored heritage space that offers a unique blend of history and innovation. Built upon the existing 6 story building, this 9th floor office space is a unique mix of heritage characteristics in the lobby with new-build modernity within your office space with floor to ceiling windows and air conditioning.

NEIGHBOURHOOD

RESTAURANTS

Gotham Steakhouse • Glowbal • Browns
Socialhouse • Chambar Restaurant • Lupo •
The Greek By Anatoli • The Parlour • El Guapo •
Gotham • Blue Water Cafe • Fanny Bay Oysters •
Blue Water Cafe • Minami • Hapa Izakaya

CAFES & OTHER EATS

Café Medina • Rocanini Coffee Roasters • Small
Victory Bakery • Waves Coffee House • Dirty
Apron • Starbucks • Prado Cafe • Timbertrain

PARKS & LIFESTYLE

Anytime Fitness • Coopers' Park • Ride Cycle
Club • Rumble Boxing Studio • The Bar Method

ARTS & ENTERTAINMENT

BC Place • Parq Vancouver Casino Resort
• Queen Elizabeth Theatre • Rogers Arena

--- EXPO LINE

--- CANADA LINE

--- WEST COAST EXPRESS

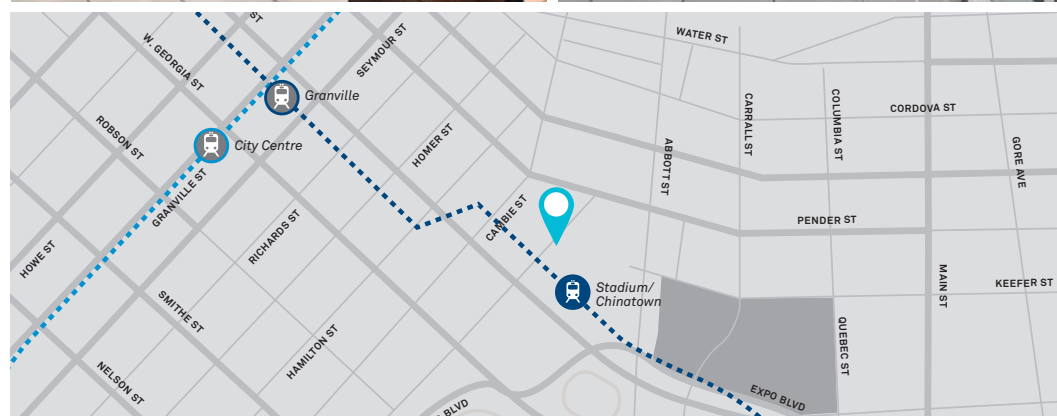
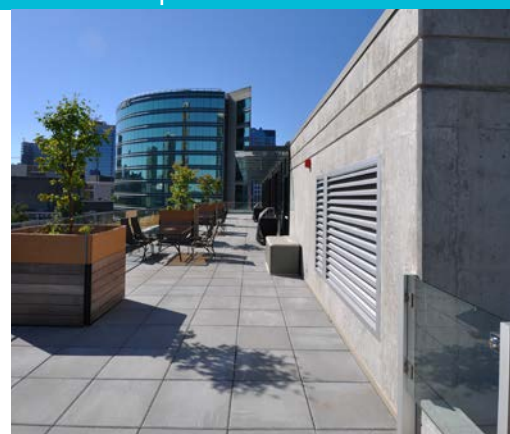
SUITE FEATURES & AMENITIES

- 18 perimeter offices (including five large offices / meeting rooms), 3 interior offices, open work area currently with 8 stations
- Large open kitchen, three private washrooms, ample storage areas
- Building has communal rooftop deck with full kitchen, dining area and outdoor patio space

5,500 ft²
OFFICE

39.00/sf/yr
LEASE

\$24,947/mo
LEASE



95 • WALK SCORE

100 • TRANSIT SCORE

82 • BIKE SCORE

relianceproperties.ca | leasing@relianceproperties.ca

E. & O.E. All information contained herein is from sources we deem reliable, and we have no reason to doubt its accuracy; however, no guarantees or responsibility is assumed thereof, and shall not form any part of future contracts. All information should be carefully verified



RELIANCE
PROPERTIES