



744

WEST HASTINGS STREET

LEASING INQUIRIES

DAN SMITH
Director of Leasing
T 604.689.1119
dans@relianceproperties.ca



744

WEST HASTINGS STREET

Situated at the southeast corner of West Hastings and Howe Streets, The Pacific Building offers an unbeatable downtown location. Close to public transit options including the Canada Line, SkyTrain, West Coast Express, and Seabus, as well as major hotels, shopping, and office complexes, it's an ideal spot for both convenience and accessibility. Ample parking is available nearby, and cyclists can take advantage of secure bike lock-up facilities, day-use lockers, and showers on the lower level.

Additional tenant amenities include a bookable boardroom and a gym. The building also offers basement storage, recycling services, and features HVAC in all suites. It was proudly BOMA Go Green Certified in May 2006, underscoring its commitment to environmental sustainability.

Retail tenants in the building include Breka Bakery, The Ordinary Beauty Company, and Bang & Olufsen, adding to the vibrant mix of offerings in the area.

BUILDING DETAILS

ADDITIONAL RENT

\$17.77 PSF PER ANNUM (2024 EST.)

MANAGEMENT FEE

6% BASE RENT

ZONING

DD - DOWNTOWN DISTRICT

UNIT SPECS

- » HVAC for year round comfort
- » 24/7 controlled access
- » Modern roller blinds
- » Oversized operable windows
- » Fully Sprinklered
- » Pre-wired with Fibre Optic



BUILDING AMENITIES

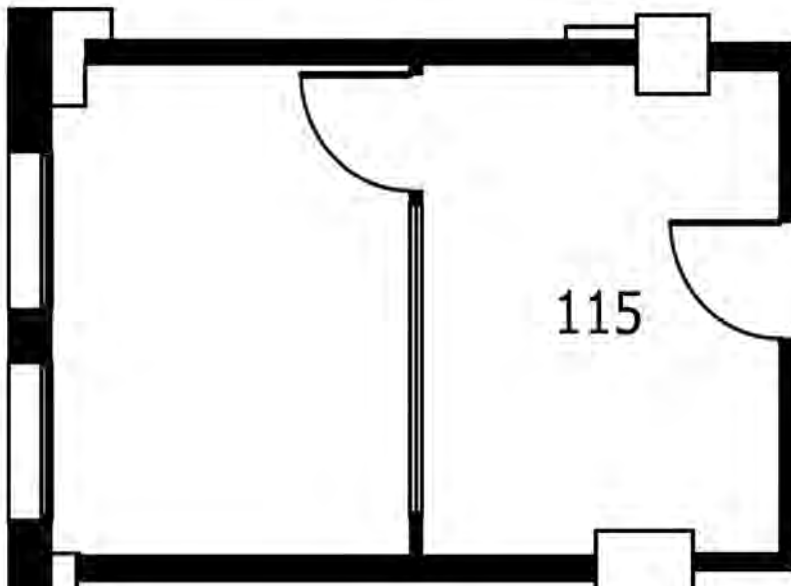
- » Fitness centre
- » End-of-trip showers and change rooms
- » Bookable tenant boardroom
- » Secured bike storage on P1
- » Storage Lockers available for rent
- » On-site building management
- » Monitored CCTV (24/7)
- » Secured fob entry
- » Canada Post Box in the Lobby



UNIT 115

354 SQUARE FEET

- » 1 Office
- » Dedicated waiting area / collaborative space
- » Glass office bringing natural light throughout the space
- » Oversized, operable windows
- » HVAC
- » Fibre Optic connection
- » 24/7 secured access



SALIENT DETAILS

BASIC RENT
\$27.00 PSF

ADDITIONAL RENT
\$17.77 PSF

MANAGEMENT FEE
6% BASIC RENT

GROSS MONTHLY RENT
\$1,369

AVAILABLE
Immediately

