



# FOR LEASE

## 815 HORNBY STREET

OFFICE SPACE FOR LEASE ACROSS FROM THE ROBSON SQUARE PROVINCIAL COURTHOUSE ON THE CORNER OF ROBSON AND HORNBY STREET

### LEASING INQUIRIES

**DAN SMITH**

Director of Leasing

T 604.689.1119

[dans@relianceproperties.ca](mailto:dans@relianceproperties.ca)

**ALAN CUSACK**

Manager, Leasing

T 236.982.1678

[alanc@relianceproperties.ca](mailto:alanc@relianceproperties.ca)



**RELIANCE**  
PROPERTIES



# 815 HORNBY STREET

## BUILDING FEATURES



HVAC for year round comfort



24/7 secured access and monitored CCTV



On-site management by Reliance Properties Ltd.



Full height glass windows provide ample natural lighting



Secured underground parking available at market rates (subject to availability)

## LOCATION



**Excellent Transit:** Nearby bike paths, multiple bus routes, and the Skytrain and Expo Lines at Granville Station



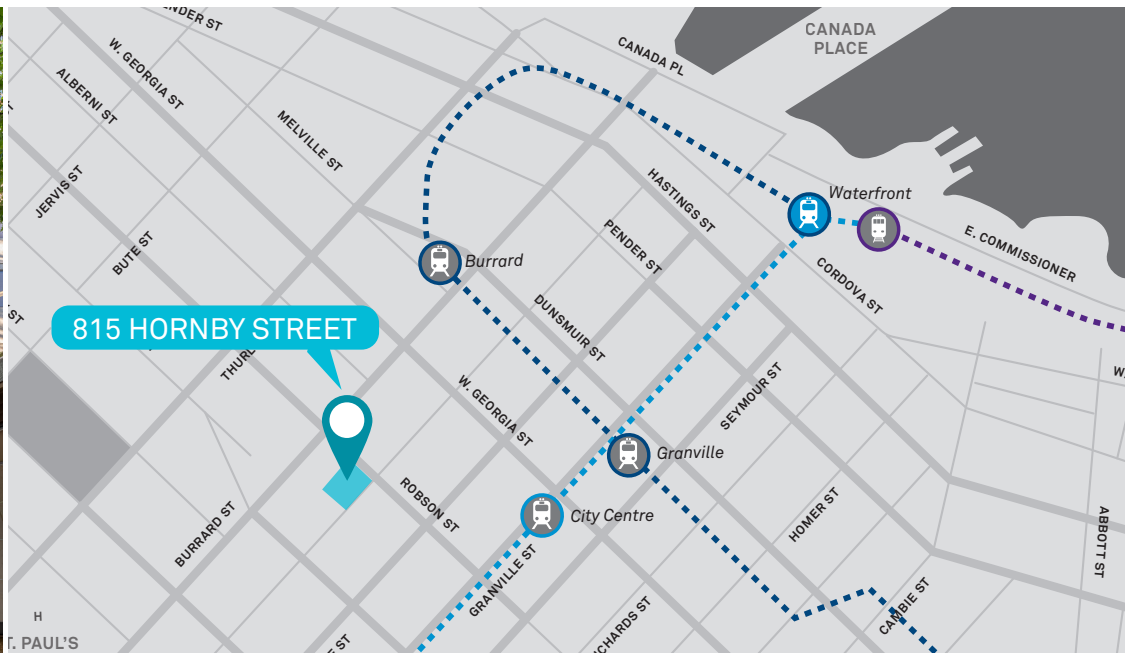
**Recreational Spaces:** Pacific Centre, Robson Street, Robson Square & Ice Rink, Scotiabank Theatre, Vancouver Art Gallery



**Restaurants & Cafes:** Cafe Artigiano, JOEY Burrard, Italian Kitchen, Starbucks, La Taqueria, Le Crocodile, Hawksworth



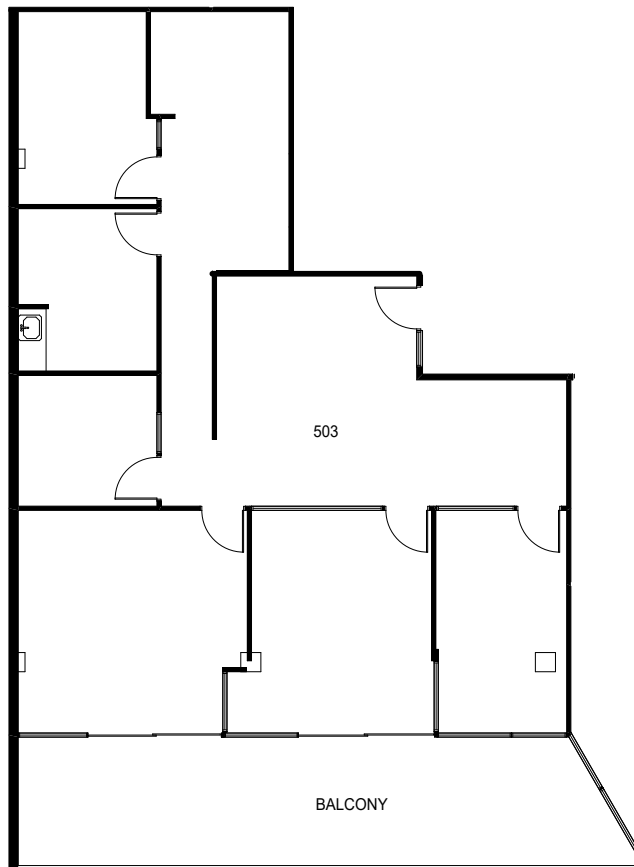
**Business Services:** BMO, Scotiabank, RBC, TD Bank, Provincial & Supreme Courts of BC



# #503 - 815 HORNBY STREET

RENTABLE AREA	1,841 sf
AVAILABLE	April 1, 2025
BASIC RENT	\$25.00 PSF per annum
ADDITIONAL RENT	\$18.25 PSF (2025 est.) + 6% Basic Rent Mgmt Fee
MONTHLY	\$6,865 + GST

- » Three executive offices
- » Two Boardrooms
- » Breakout / collaboration area
- » Kitchen
- » Private balcony overlooking Robson Square
- » HVAC



Unit #503 1,841 sf

