



FOR LEASE

918 ROBSON STREET

PRIME RETAIL STOREFRONT WITH EXCEPTIONAL
FRONTAGE IN VANCOUVER'S LUXURY RETAIL DISTRICT

LEASING INQUIRIES

DAN SMITH

Director of Leasing

T 604.689.1119

dans@relianceproperties.ca

ALAN CUSACK

Manager, Leasing

T 236.982.1678

alanc@relianceproperties.ca



918 ROBSON STREET

BUILDING FEATURES



Located on Robson Street, Vancouver's shopping destination



Unbeatable frontage along Robson Street and Hornby Street



Surrounded by premier national retailers, restaurants and amenities



24/7 secured access and monitored CCTV cameras



Gated parking available in the building (subject to availability)

LOCATION



Excellent Transit: Nearby bike paths, multiple bus routes, the Skytrain at Pacific Centre and Expo Line from Granville Station



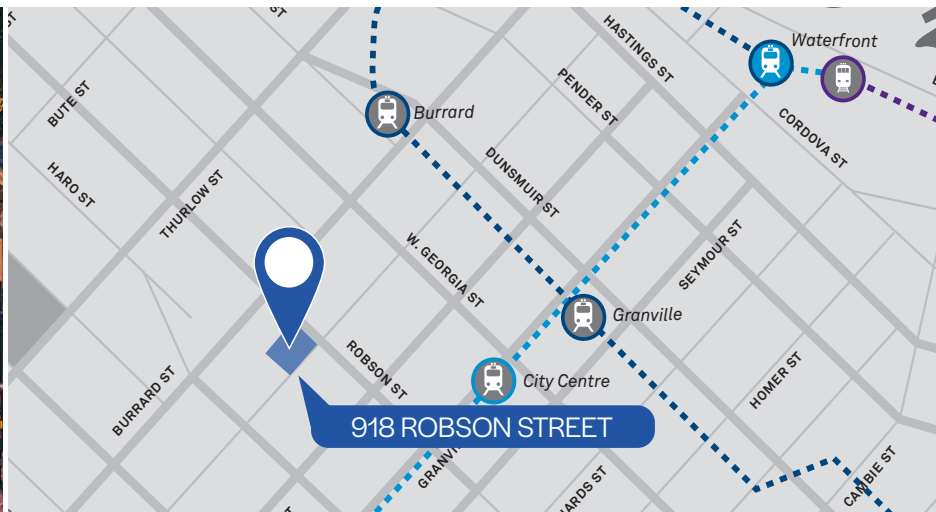
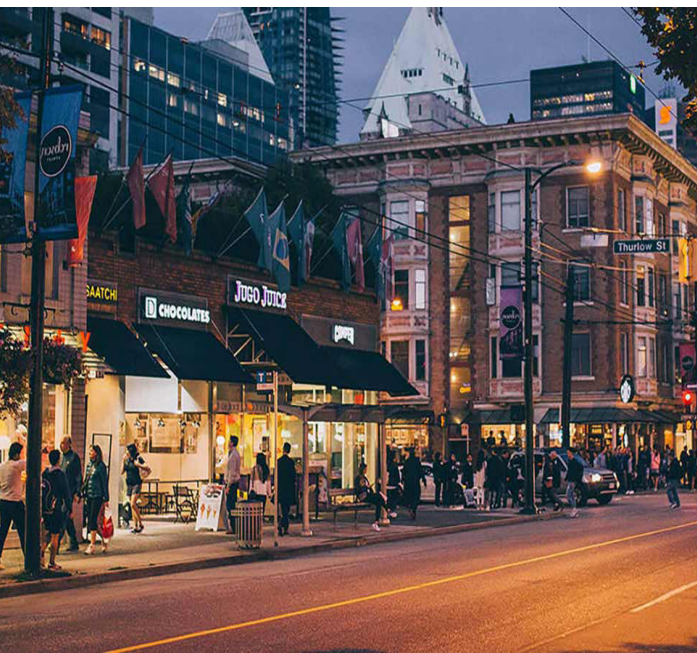
Recreational Spaces: Canada Place, Pacific Centre, Robson Square & Ice Rink, Vancouver Art Gallery, Nelson Park



Restaurants & Cafes: Joe Fortes, Earls Kitchen & Bar, Bel Cafe, Coast, Black & Blue, Steakhouse, JOEY Burrard, Thierry



Business Services: BMO, Scotiabank, Royal Bank of Canada, TD Bank, Service Canada



WALK SCORE
100

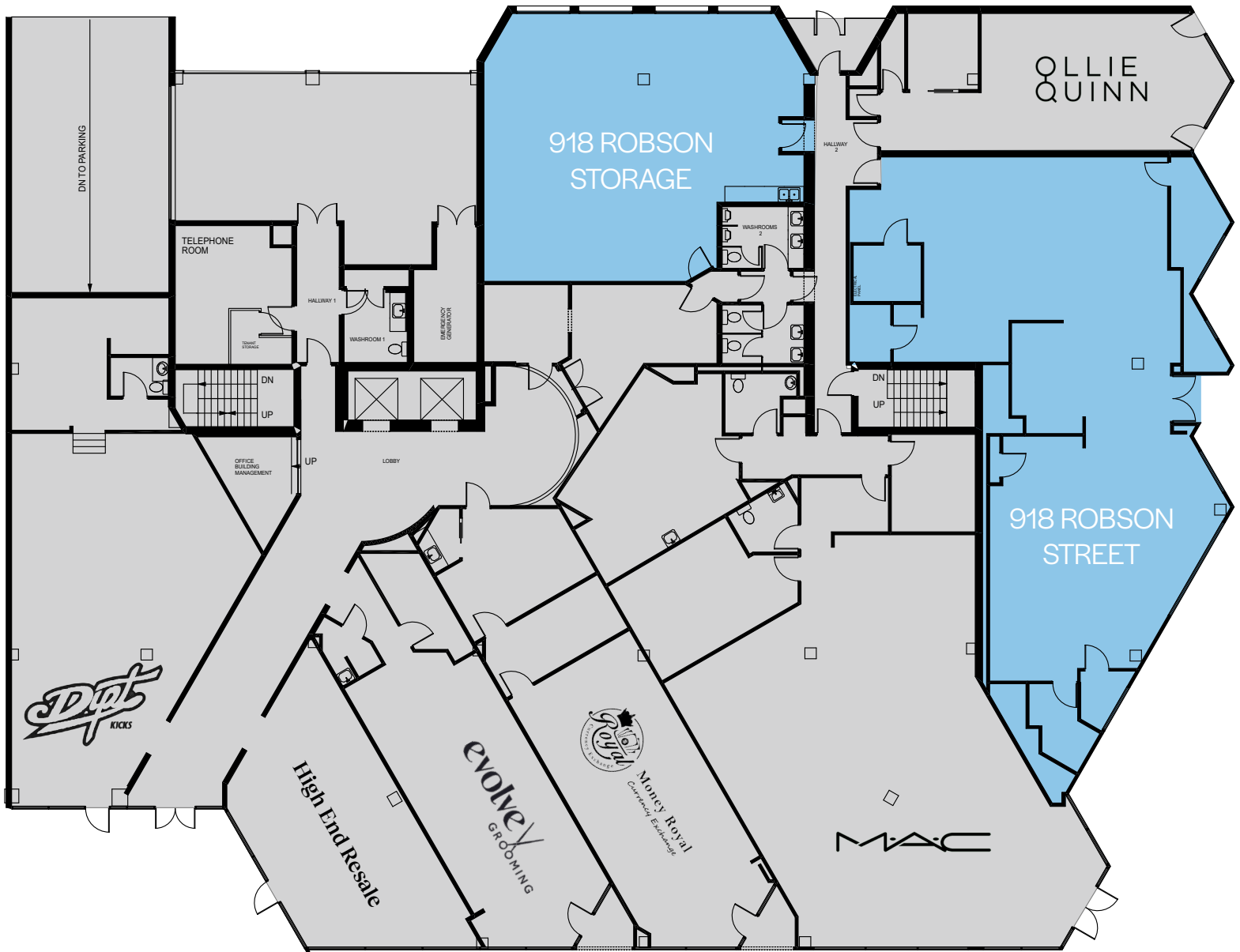


TRANSIT SCORE
100



BIKE SCORE
98

THE BUILDING



This retail storefront is located at the corner of Robson and Hornby Street in **Vancouver's luxury retail district** directly adjacent to the Hotel Vancouver, UBC's downtown campus, the Provincial Law Courts and Pacific Centre. The building is amenitized by many premium retailers, high-end restaurants, hotels, transit, fitness studios and community parks.

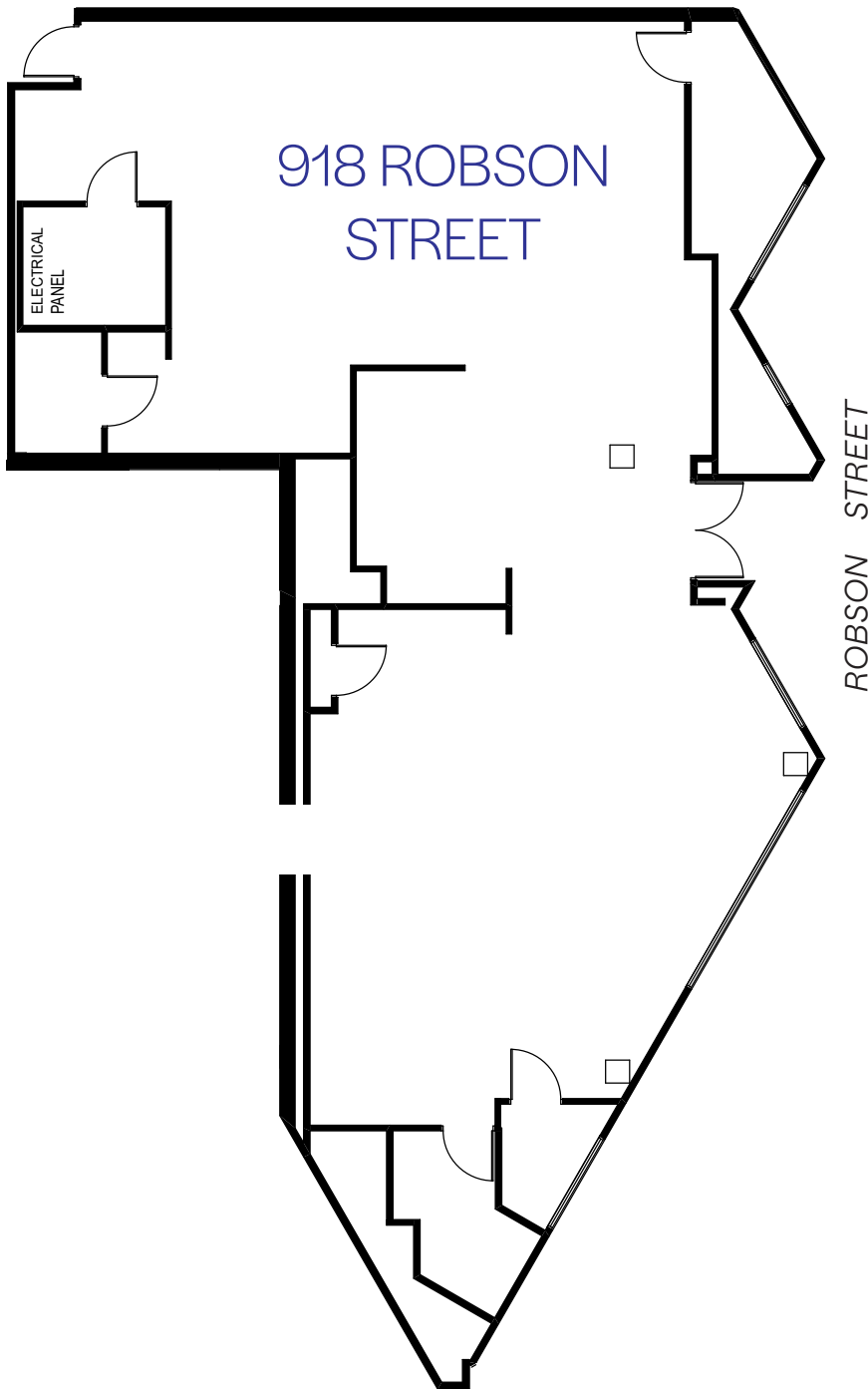


918 ROBSON STREET FLOORPLAN

SALIENT DETAILS - RETAIL

RENTABLE AREA	2,704 sf
AVAILABLE	June 1, 2026
ASKING RENT	Inquire
ADDITIONAL RENT	\$17.77 PSF (2026 est.) + 6% Basic Rent Mgmt Fee

- » Unbeatable frontage along Robson Street
- » Multiple window and fascia signage opportunities along Robson Street
- » Strong national and international retailers as neighboring tenants
- » High-end retail finishes throughout



918 ROBSON STREET FLOORPLAN

SALIENT DETAILS - STORAGE

RENTABLE AREA	1,781 sf
AVAILABLE	June 1, 2026
ASKING RENT	Inquire
ADDITIONAL RENT	\$17.77 PSF (2026 est.) + 6% Basic Rent Mgmt Fee

- » Interior CRU designed for retailer storage
- » Plumbing in suite
- » Modern lighting
- » HVAC for year round comfort

