



FOR LEASE

918 ROBSON STREET

PRIME RETAIL STOREFRONT WITH EXCEPTIONAL FRONTAGE IN VANCOUVER'S LUXURY RETAIL DISTRICT

LEASING INQUIRIES

DAN SMITH

Director of Leasing

T 604.689.1119

dans@relianceproperties.ca

ALAN CUSACK

Manager, Leasing

T 236.982.1678

alanc@relianceproperties.ca



918 ROBSON STREET

BUILDING FEATURES



Located on Robson Street, Vancouver's shopping destination



Unbeatable frontage along Robson Street and Hornby Street



Surrounded by premier national retailers, restaurants and amenities



24/7 secured access and monitored CCTV cameras



Gated parking available in the building (subject to availability)

LOCATION



Excellent Transit: Nearby bike paths, multiple bus routes, the Skytrain at Pacific Centre and Expo Line from Granville Station



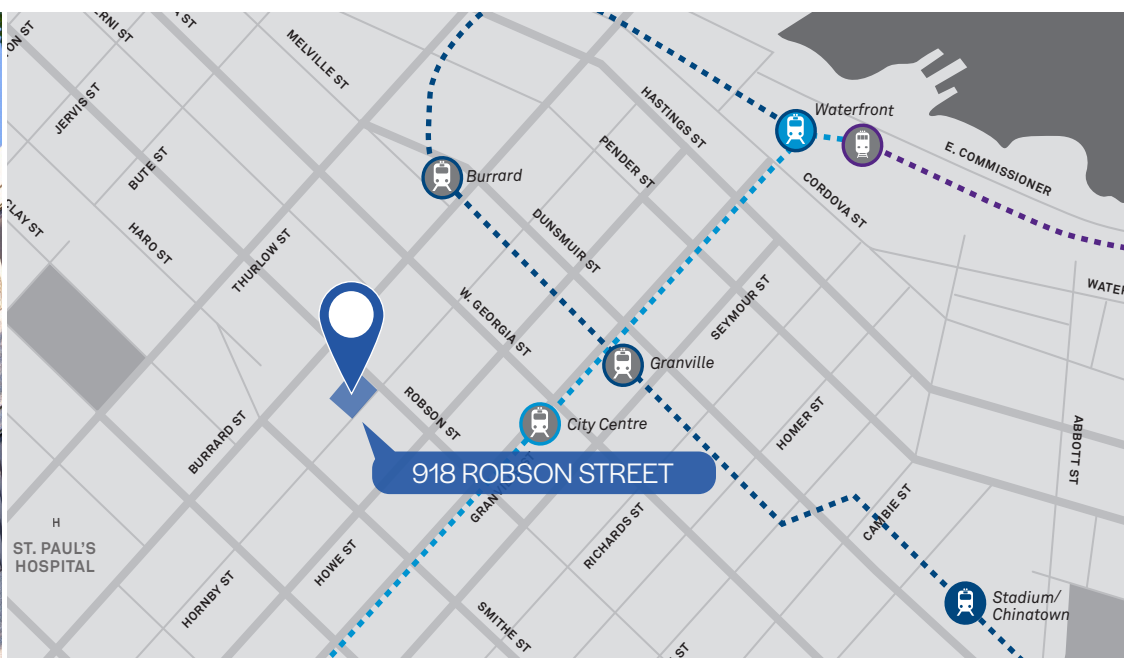
Recreational Spaces: Canada Place, Pacific Centre, Robson Square & Ice Rink, Vancouver Art Gallery, Nelson Park



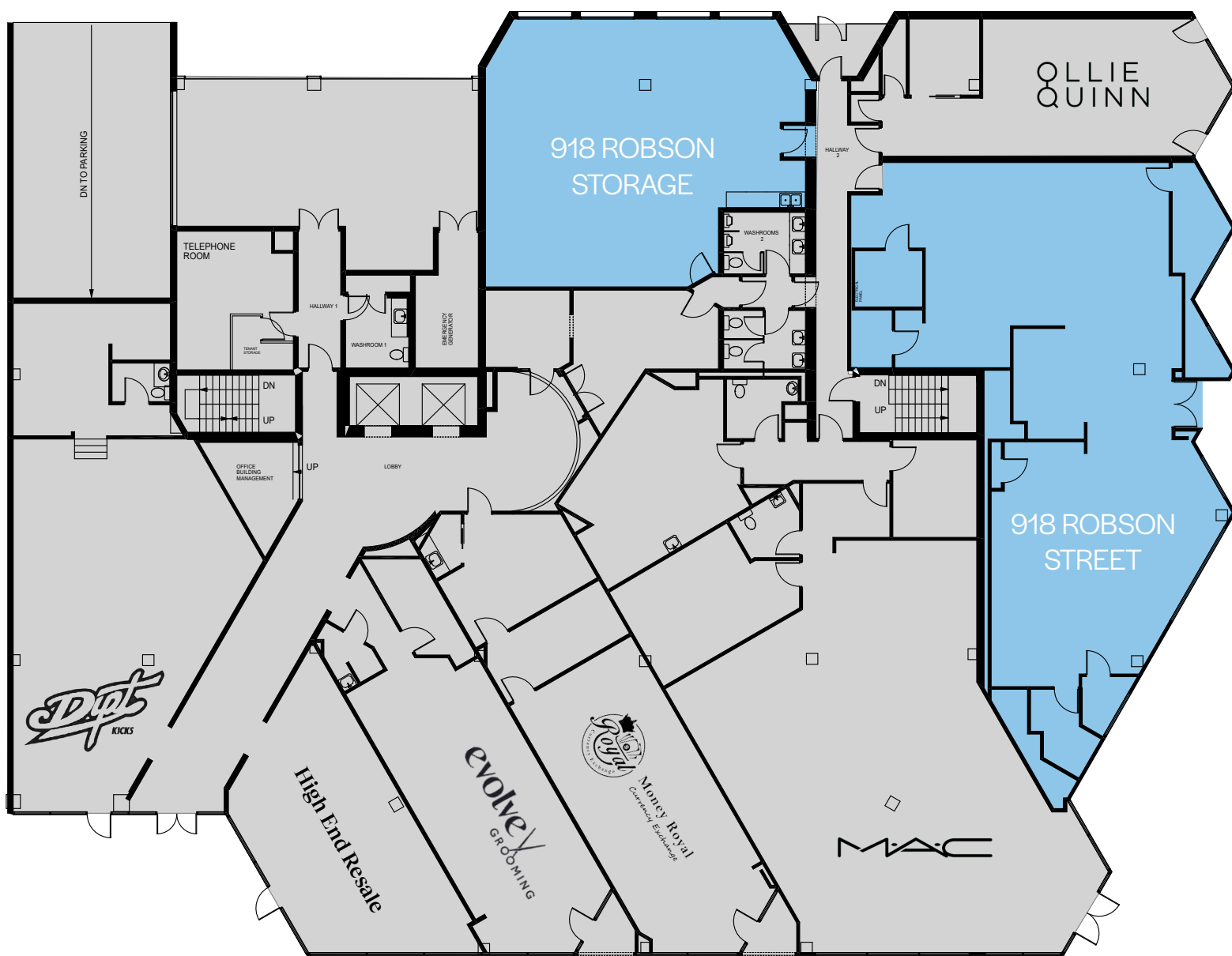
Restaurants & Cafes: Joe Fortes, Earls Kitchen & Bar, Bel Cafe, Coast, Black & Blue, Steakhouse, JOEY Burrard, Thierry



Business Services: BMO, Scotiabank, Royal Bank of Canada, TD Bank, Service Canada



THE BUILDING



This retail storefront is located at the corner of Robson and Hornby Street in **Vancouver's luxury retail district** directly adjacent to the Hotel Vancouver, UBC's downtown campus, the Provincial Law Courts and Pacific Centre. The building is amenitized by many premium retailers, high-end restaurants, hotels, transit, fitness studios and community parks.

RETAIL	RENTABLE AREA	2,724 SF
STORAGE	RENTABLE AREA	1,781 SF

918 ROBSON STREET FLOORPLAN

SALIENT DETAILS - RETAIL

RENTABLE AREA	2,724 sf
---------------	----------

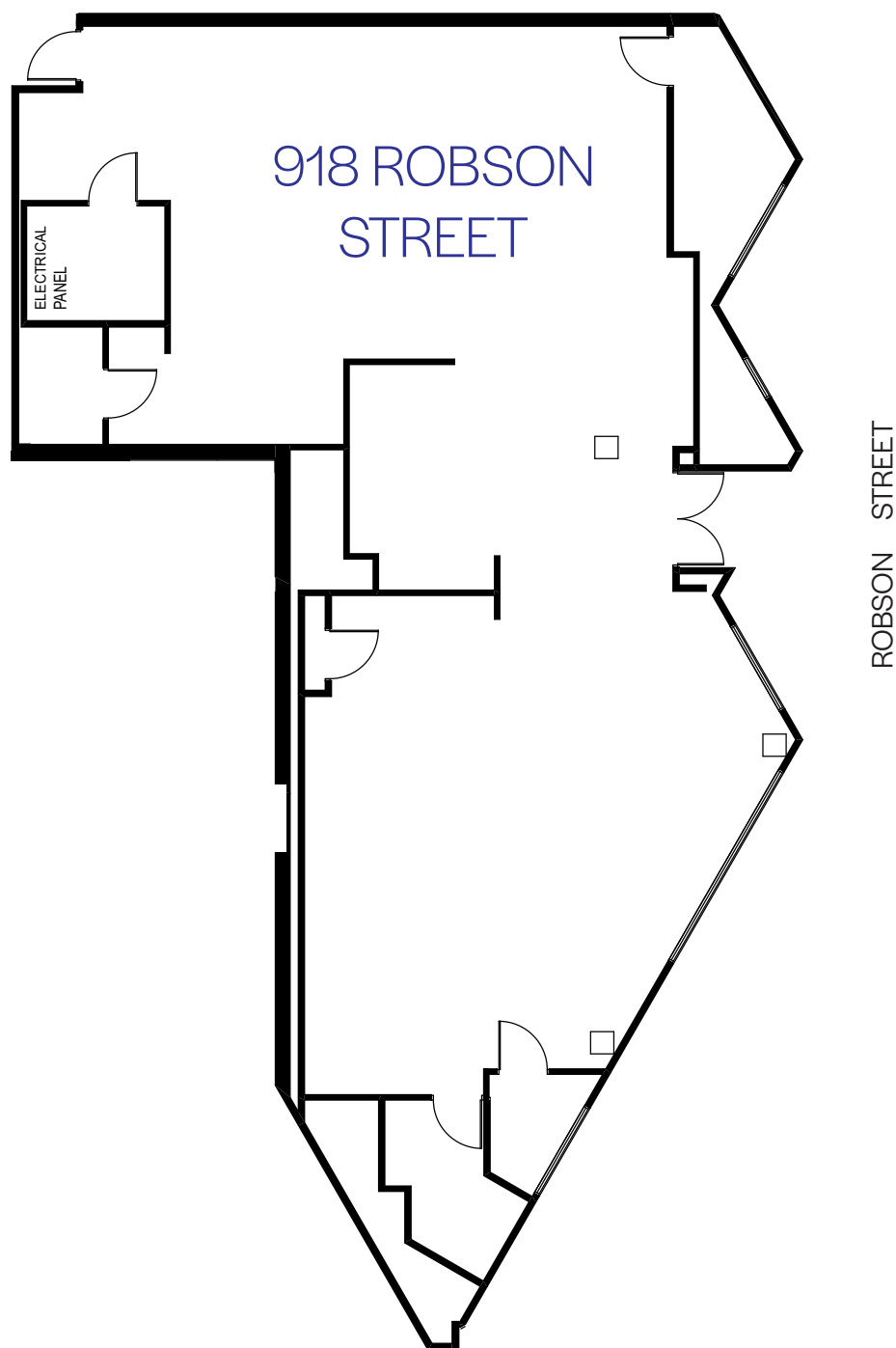
AVAILABLE	June 1, 2026
-----------	--------------

ASKING RENT	Inquire
-------------	---------

ADDITIONAL RENT	\$18.25 PSF (2025 est.) + 6% Basic Rent Mgmt Fee
-----------------	---

- » Unbeatable frontage along Robson Street
- » Strong national and international retailers as neighboring tenants

- » Modern finishes with LED lighting throughout
- » HVAC for year round comfort



918 ROBSON STREET FLOORPLAN

SALIENT DETAILS - STORAGE

RENTABLE AREA	1,781 sf
AVAILABLE	June 1, 2026
ASKING RENT	Inquire
ADDITIONAL RENT	\$18.25 PSF (2025 est.) + 6% Basic Rent Mgmt Fee

- » Interior CRU designed for retailer storage
- » Plumbing in suite
- » Modern lighting
- » HVAC for year round comfort

918 ROBSON
STREET
STORAGE



WALK SCORE 100



TRANSIT SCORE 100



BIKE SCORE 98

